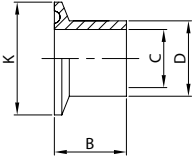


SEMIRACCORDO SR.
WG. FERRULE
FERRULE SR.
ENLACE SR.

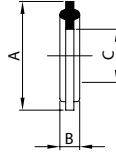
K14 WD



| DN | B | C | D | K | gr |
|-----|------|-------|-------|-------|-------|
| 10 | 21,0 | 9,5 | 12,0 | 34,0 | 19 |
| 15 | 21,0 | 15,5 | 18,0 | 34,0 | 20 |
| 20 | 21,0 | 19,5 | 22,0 | 34,0 | 30 |
| 25 | 28,6 | 25,0 | 28,0 | 50,5 | 70 |
| 32 | 28,6 | 31,0 | 34,0 | 50,5 | 65 |
| 40 | 28,6 | 37,0 | 40,0 | 50,5 | 60 |
| 50 | 28,6 | 49,0 | 52,0 | 64,0 | 95 |
| 65 | 28,6 | 66,0 | 70,0 | 91,0 | 150 |
| 80 | 28,6 | 81,0 | 85,0 | 106,0 | 195 |
| 100 | 28,6 | 100,0 | 104,0 | 119,0 | 235 |
| 125 | 28,6 | 124,0 | 129,0 | 144,4 | 805 |
| 150 | 28,6 | 149,0 | 154,0 | 166,8 | 1.010 |
| 200 | 28,6 | 199,0 | 204,0 | 218,0 | 1.410 |

GUARNIZIONE
GASKET
JOINT
JUNTA

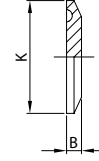
K40 D



| DN | A | B | C |
|-----|-------|-----|-------|
| 10 | 34,0 | 5,5 | 9,5 |
| 15 | 34,0 | 5,5 | 15,5 |
| 20 | 34,0 | 5,5 | 19,5 |
| 25 | 50,5 | 5,5 | 25,0 |
| 32 | 50,5 | 5,5 | 31,0 |
| 40 | 50,5 | 5,5 | 37,0 |
| 50 | 64,0 | 5,5 | 49,0 |
| 65 | 91,0 | 5,5 | 66,0 |
| 80 | 106,0 | 5,5 | 81,0 |
| 100 | 119,0 | 5,5 | 100,0 |
| 104 | 119,0 | 5,5 | 97,6 |
| 125 | 144,4 | 5,5 | 124,0 |
| 150 | 166,8 | 5,5 | 149,0 |
| 200 | 218,0 | 5,5 | 199,0 |

TAPPO
SOLID END CAP
BOUCHON
TAPÓN

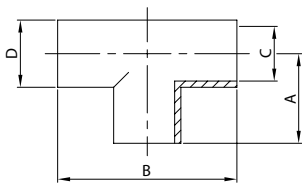
K16 D



| DN | B | K | gr |
|-----|------|-------|-------|
| 10 | 6,4 | 34,0 | 15 |
| 15 | 6,4 | 34,0 | 15 |
| 20 | 6,4 | 34,0 | 70 |
| 25 | 6,4 | 50,5 | 70 |
| 32 | 6,4 | 50,5 | 70 |
| 40 | 6,4 | 50,5 | 70 |
| 50 | 6,4 | 64,0 | 140 |
| 65 | 6,4 | 91,0 | 410 |
| 80 | 6,4 | 106,0 | 480 |
| 100 | 6,4 | 119,0 | 570 |
| 125 | 13,0 | 144,4 | 1.925 |
| 150 | 13,0 | 166,8 | 2.600 |
| 200 | 13,0 | 218,0 | 3.900 |

TEE EL.
TEE PE.
TE BL.
TE EL.

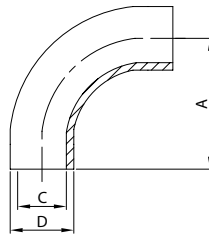
200 D



| DN | A | B | C | D | gr |
|-----|-------|-------|-------|-------|-------|
| 10 | 26,0 | 52,0 | 9,5 | 12,0 | 35 |
| 15 | 35,0 | 70,0 | 15,5 | 18,0 | 75 |
| 20 | 40,0 | 80,0 | 19,5 | 22,0 | 95 |
| 25 | 50,0 | 100,0 | 25,0 | 28,0 | 120 |
| 32 | 55,0 | 110,0 | 31,0 | 34,0 | 175 |
| 40 | 60,0 | 120,0 | 37,0 | 40,0 | 240 |
| 50 | 70,0 | 140,0 | 49,0 | 52,0 | 310 |
| 65 | 80,0 | 160,0 | 66,0 | 70,0 | 650 |
| 80 | 90,0 | 180,0 | 81,0 | 85,0 | 1.070 |
| 100 | 100,0 | 200,0 | 100,0 | 104,0 | 1.850 |
| 125 | 124,0 | 248,0 | 124,0 | 129,0 | 2.250 |
| 150 | 150,0 | 300,0 | 149,0 | 154,0 | 2.890 |
| 200 | 200,0 | 400,0 | 199,0 | 204,0 | 5.100 |

CURVA 90° ES.
BEND 90° WE.
COUDE 90° BS.
CODO 90° ES.

310 D



| DN | A | C | D | gr |
|-----|-------|-------|-------|-------|
| 10 | 26,0 | 9,5 | 12,0 | 15 |
| 15 | 35,0 | 15,5 | 18,0 | 20 |
| 20 | 40,0 | 19,5 | 22,0 | 50 |
| 25 | 50,0 | 25,0 | 28,0 | 65 |
| 32 | 55,0 | 31,0 | 34,0 | 100 |
| 40 | 60,0 | 37,0 | 40,0 | 150 |
| 50 | 70,0 | 49,0 | 52,0 | 190 |
| 65 | 80,0 | 66,0 | 70,0 | 410 |
| 80 | 90,0 | 81,0 | 85,0 | 530 |
| 100 | 100,0 | 100,0 | 104,0 | 810 |
| 125 | 188,0 | 124,0 | 129,0 | 1.230 |
| 150 | 230,0 | 149,0 | 154,0 | 1.760 |
| 200 | 306,0 | 199,0 | 204,0 | 3.130 |